

ಇಲ್ಲಂಟೆ ತೆಲ್ಲಲಾಂಟೆದನಿ
ಮಾ ವಿಶ್ವಾಸಂ



Iconic Projects, Inspired Lifestyles

Sri Bhramara 
Ajanthaa
Discover Royal Living
@Bapatla





A Vision to Excel



Ramachandra Rao Galla
Chairman & Managing Director

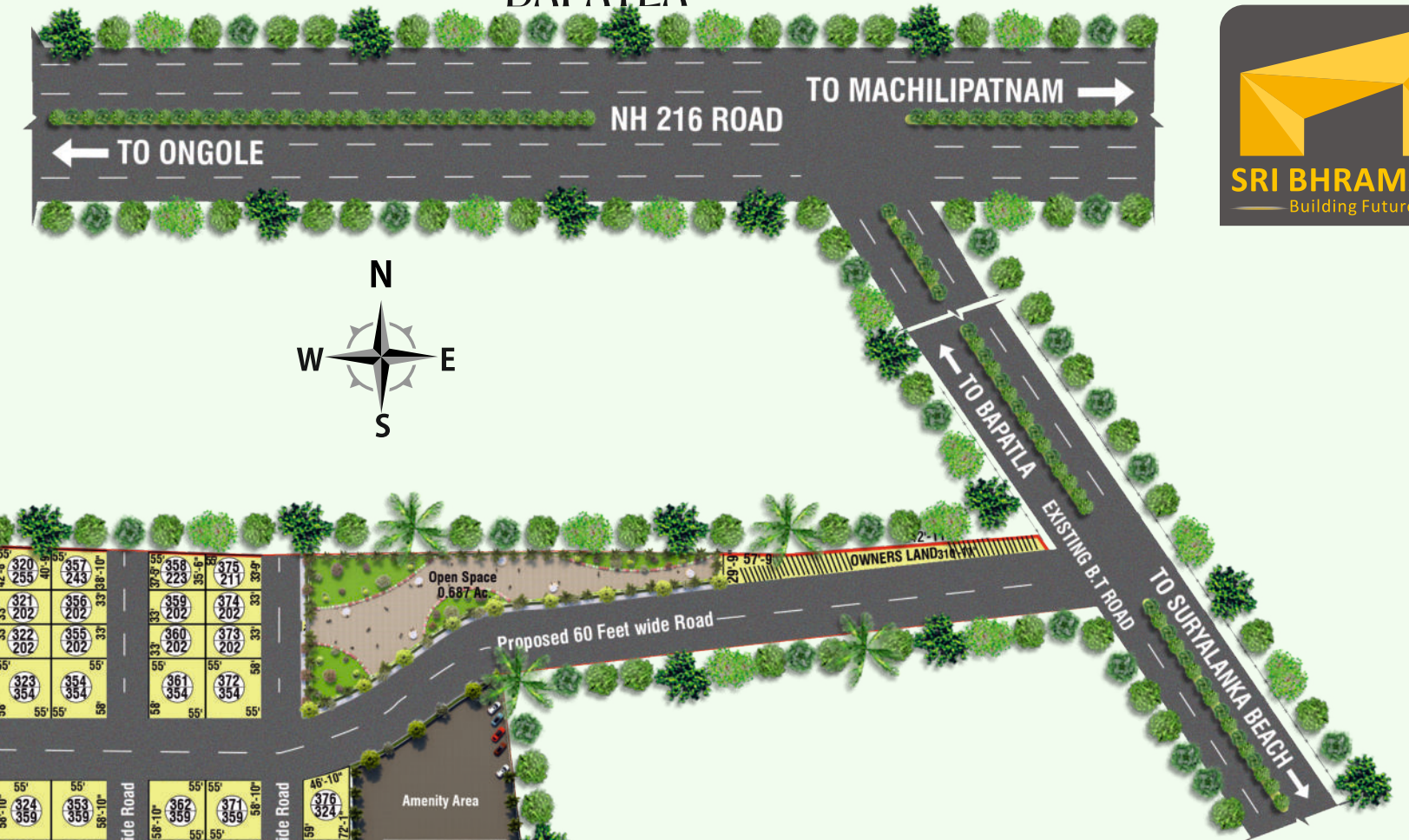
Sri Bhramara Townships, guided by its visionary CMD, Sri Ramachandra Rao Galla, stands as a trendsetter and unrivalled leader of innovation and excellence, transforming the real estate landscape with visionary projects that capture the essence of modern living. With over 10,000+ satisfied homeowners and growing, Sri Bhramara continues to set the standard for excellence in real estate.

Adding to its illustrious portfolio is a spectacular new venture near the iconic Suryalanka Beach in Bapatla. This project features stunning villas, stylish cottages, and cosily designed 1 and 2 BHK homes. Every detail is crafted to perfection, offering residents a serene lifestyle infused with the soothing allure of the sea. For those who seek an extraordinary living experience, this is a golden opportunity.

Discover the charm of Bapatla

Located in the heart of the newly established Bapatla district, our project sits at the crossroads of growth and serenity. Bapatla, the district headquarters, is home to a vibrant community and offers unparalleled access to popular destinations, including the renowned Tourist Favourite Suryalanka Beach.





TENTATIVE LAYOUT PLAN

- RESIDENTIAL HOUSING
- RESORT COTTAGES



SALIENT FEATURES

- Entrance Arch equipped with 24-hour CCTV surveillance & security
- Compound wall featuring Solar fencing surrounding the layout
- 60 & 40 Feet CC Roads adorned with landscaping on both sides with street lights
- Water Pipeline connection to every plot for convenient access
- Implementation of an Underground drainage system
- Installation of underground electric cable line for uninterrupted power supply & safety
- Inclusion of Rainwater harvesting pits for sustainable water management
- Designer landscaping to enhance the aesthetic appeal
- Dedicated parks designed exclusively for children and a Walking track for residents' leisure
- 100% Vaasthu Compliant

PLAN SHOWING IN S.NO. 198/D, E, 2D, 4, 5, 6, 7, 200/1, 1A, 1B, 1E, 2, 3, 220/2, 221/1, 1A, 1B, 1C, 1D, 1E, 1F, 2, 2A, 2B, 2C, 2D, 2E, 2J, 222/2A, 2B, 2C, 402/1A, IN MARUPROLUVARIPALEM VILLAGE, BAPATLA MANDAL, BAPATLA DISTRICT

EAST DUPLEX HOUSE INTERIOR



WEST DUPLEX HOUSE INTERIOR



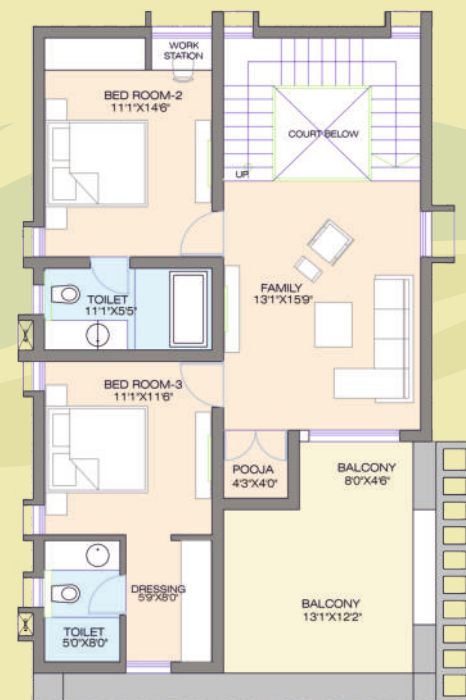
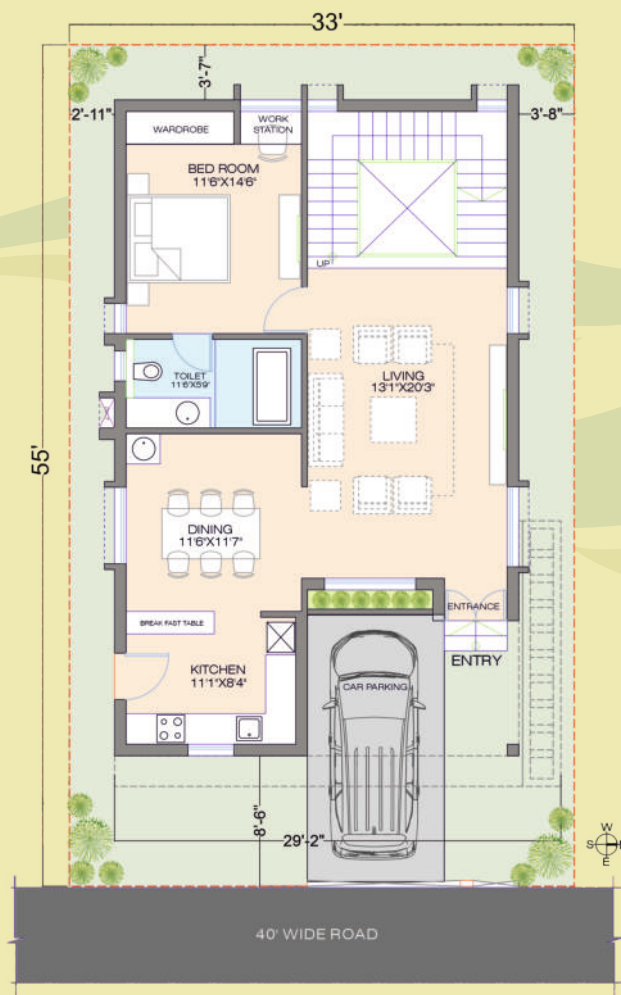
Luxury Living Meets
Modern Convenience

Our development includes meticulously planned Duplex Housing, 1BHK cottages, 2BHK cottages, Villa cottages and plots, designed to offer modern urban amenities amidst a serene coastal setting. Every aspect of this project reflects the Sri Bhramara's splendid style, blending elegance with functionality to create a community you'll be proud to call home.

EAST DUPLEX HOUSE

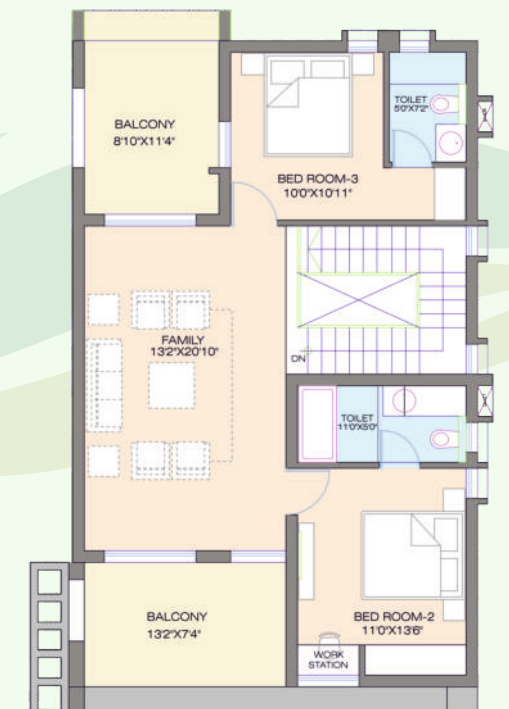
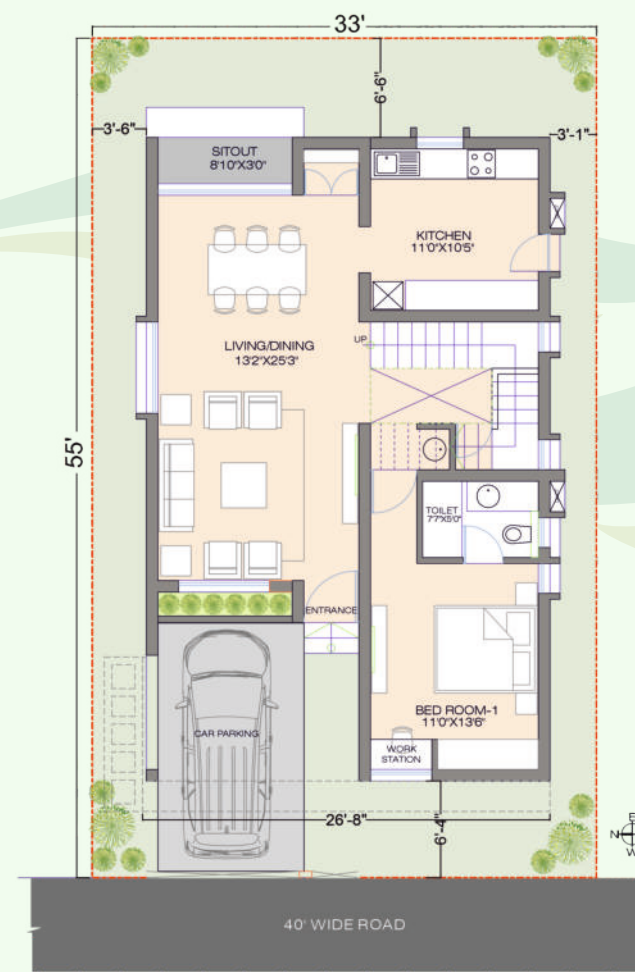


WEST DUPLEX HOUSE



EAST FACING UNIT: 33'X55' (202 Sq.yds)
GROUND FLOOR = 1233 SFT
TOTAL BUILTUP AREA = 2,611 SFT

FIRST FLOOR = 1189 SFT



WEST FACING UNIT: 33'X55' (202 Sq.yds)
GROUND FLOOR = 1215 SFT
TOTAL BUILTUP AREA = 2,559 SFT

FIRST FLOOR = 1169 SFT

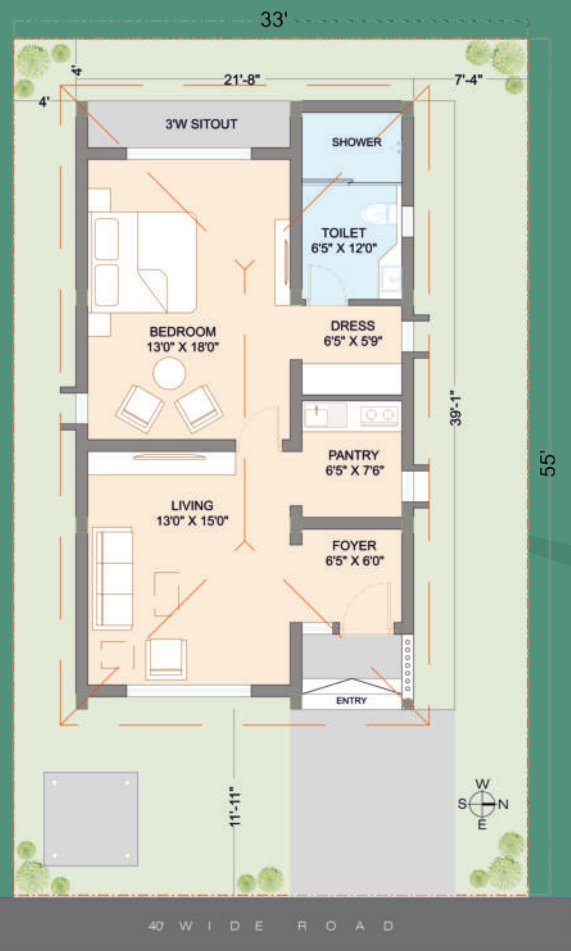
1 BHK EAST Cottage



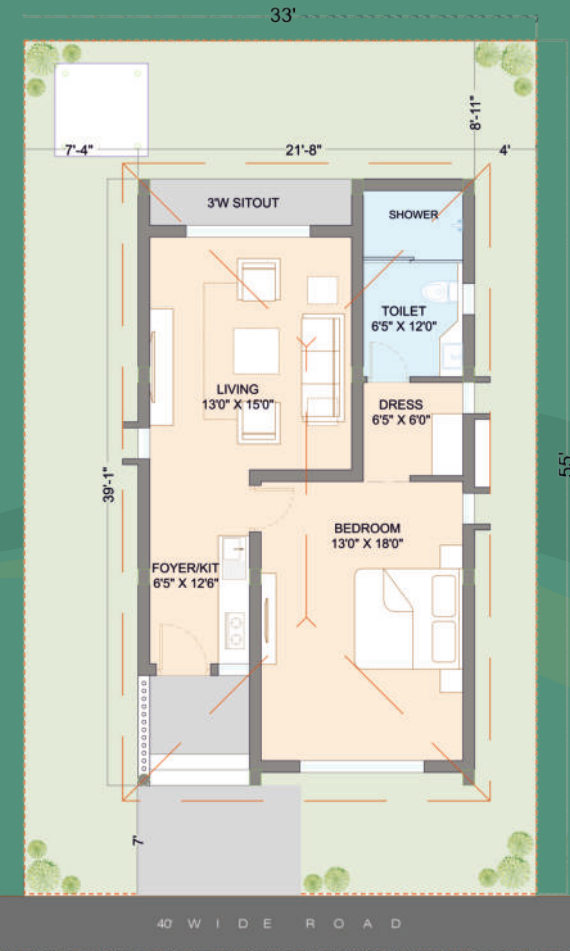
1 BHK WEST Cottage



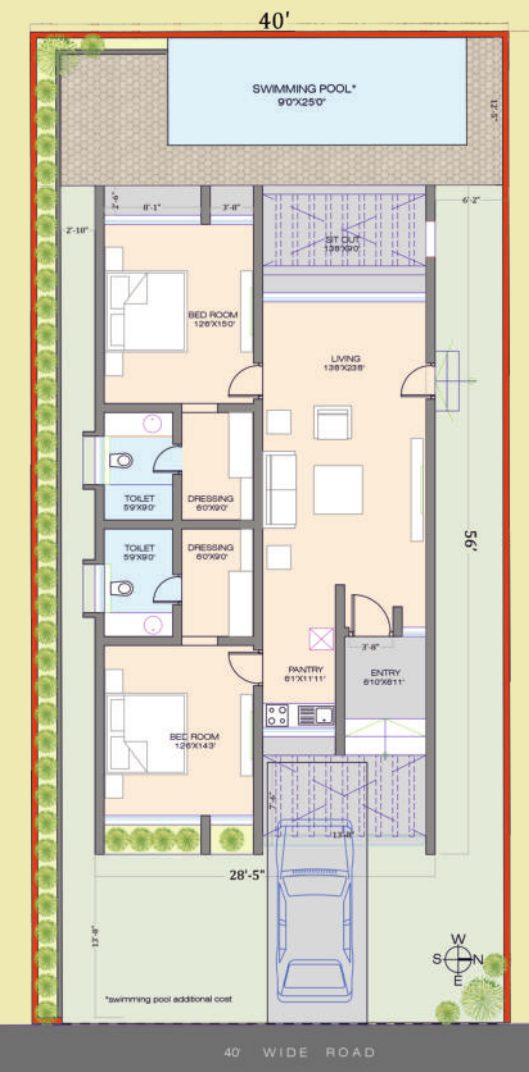
2 BHK EAST Cottage



EAST COTTAGE
33'x55' = 202 sq.yds
BUILT UP AREA - 846.00 SFT



WEST COTTAGE
33'x55' = 202 sq.yds
BUILT UP AREA - 846.00 SFT



Charming Homes for a Blissful Life

Discover our aesthetically designed 1BHK and 2BHK cottages, Villa cottages offering modern urban amenities with perfect space utilization, ensuring total comfort and convenience for you. Set in a peaceful coastal retreat, this is the ideal place to enjoy quality time with family and friends. Surrounded by lush greenery and the freshness of open spaces, you can savour nature's crisp morning air and relax with the soothing evening breeze, away from pollution. Every aspect of this project reflects Sri Bhramara's signature style, blending timeless elegance with practicality to offer serene and iconic lifestyles.

EAST COTTAGE
40'X80' (356 Sq.yards)

TOTAL BUILT UP AREA
1596.00 SFT

Parks



Open Amphitheatre



Resort-Style Elegance Within easy reach from the Beach

To complement this vibrant community, we are also building a luxurious resort that will cater to the needs of visitors to Suryalanka Beach, which is just 3 km away. Whether for a weekend getaway or a special event, this resort will redefine convenience and comfort.



Prime Location with Coastal Charm and City Convenience

Nestled near National Highway 216 and just meters from the urban limits of Bapatla, our project benefits from excellent connectivity. This region is witnessing extraordinary growth in coastal infrastructure, further enhanced by proximity to the prestigious agricultural university, a beacon of innovation and education.

- Just minutes from the renowned Suryalanka Beach, a favourite tourist hotspot.
- Quick access to the rapidly growing commercial hub of Bapatla.
- Situated within the Bapatla municipal limits, near the district headquarters.
- Only 300 meters from Bapatla Bypass (NH 216) for seamless travel.
- Perfectly located on the main Bapatla-Suryalanka Beach Road.
- A short 4 km drive to Suryalanka Beach for scenic relaxation.
- Conveniently 3 km from the Bus Stand and Railway Station for easy commuting.

Location Map



Sri Bhramara
Ajanthaa
Discover Royal Living
@Bapatla

Bay of Bengal



Site Address:

S.No. 198/D, Maruproluvaripalem Rural,
Suryalanka Road, Bapatla, Andhra Pradesh

For Bookings Contact:



SRI BHRAMARA NEST PVT. LTD.

Head Office:

1st Floor, APSFC Bhavan,
Industrial Park, Gorantla,
MG Inner Ring Road,
Guntur, A.P. - 522 034.

Corporate Office:

Vishnu Nilayam, Door. No. 59A-15-33,
Badraiah Nagar, Panta Kaalva Road,
NTR Circle, Patamata,
Vijayawada. A.P. - 520 010.

Ongole Office:

4th Floor, Vijaya Towers,
Sambasiva Nagar,
Revenue Ward 34,
Ongole. A.P. - 523 002.



www.sribhramara.com



Guntur | Krishna | N.T.R | Bapatla | Palnadu | Prakasam

E: info@sribhramara.com

Follow us:    

Note: This brochure is only a conceptual presentation and not a legal offering. The promoters reserve right to make changes in plans, elevation and specifications as deemed fit.